

# SEVENS & *Classics*

## BRANDS HATCH

### CATERHAM SEVEN UPGRADE PRICE LIST



Sevens & Classics Ltd  
Brands Hatch Park  
Fawkham  
Kent  
DA3 8PU

01474 871184  
[enquiries@sevensandclassics.com](mailto:enquiries@sevensandclassics.com)  
[www.sevensandclassics.com](http://www.sevensandclassics.com)

All prices include Vat @ 20%

## Table of Contents

<i>Engine &amp; Exhaust</i>	<i>3</i>
<i>Body</i>	<i>5</i>
<i>Brakes &amp; Suspension</i>	<i>7</i>
<i>Interior</i>	<i>8</i>
<i>Carbon Parts</i>	<i>13</i>
<i>Lighting</i>	<i>16</i>
<i>Electrical</i>	<i>19</i>
<i>Weather Protection</i>	<i>21</i>
<i>Luggage &amp; Car Covers</i>	<i>22</i>
<i>Wheels &amp; Tyres</i>	<i>23</i>
<i>Transmission</i>	<i>24</i>
<i>Merchandise</i>	<i>25</i>
<i>Services</i>	<i>27</i>



**Sigma 125 to 140bhp**  
**Sigma 125 to 140bhp**  
**Sigma 150 to 140bhp**  
**Sigma VVT 135 to 152bhp**  
**Sigma Cambelt Change**

Including lightened flywheel  
 Drivability upgrade

**£1500** inc fitting  
**£2000** inc fitting  
**£1000** inc fitting  
**£1850** inc fitting  
**£450**



**K Series Supersport Plus**  
**K Series Supersport R Plus**  
**K Series ECU Map Upgrade**  
**K Series Cambelt Change**

10% bhp increase + drivability EU3 only  
 50% bhp increase + drivability + light flywheel  
 EU3 cars only

**£1080** inc fitting  
**£6960** inc fitting  
**£270**  
**£210**



**Vauxhall 8v 100bhp to 125bhp** 1.6ltr –1.8ltr  
**Vauxhall 8v Cambelt Change**

**£2500** inc fitting  
**£180**



**Duratec 175 to 210bhp**  
**Duratec 210 to 220bhp**  
**Duratec 175 to 220bhp**  
**Duratec to 250bhp**

**£3000** inc fitting  
**£1850** inc fitting  
**£3900** inc fitting  
**£6500** inc fitting



**DECIBEL SLAYER**

Bolt on exhaust noise / decibel reducer. Take seconds to fit or remove and can make the difference between a great track day, or going home!

Decibel Slayer

**£115**



**ACOUSTA-FIL EXHAUST SILENCER PACKING**

The Acousta-Fil fills the silencer effectively ensuring optimum sound absorbtion. Acousta-Fil can be cut to size and does not need to be tightly over wrapped, the heat from the exhaust expands accordingly.

Acousta-Fil 500mm x 900mm

**£42**



**LIGHTENED FLYWHEEL**

We can supply or supply and fit lightened flywheels to both the K Series and Sigma powered cars. This is a really noticeable upgrade, giving the engine a much more lively pickup, aiding drivability and throttle control.

Lightened Flywheel - K Series  
 Lightened Flywheel - Sigma Fixed Cam  
 Lightened Flywheel - Sigma Variable Cam

**£420** **£1050** inc fitting  
**£495** **£1090** inc fitting  
**£495** **£1090** inc fitting



**ALLOY RADIATOR**

We can supply or supply and fit lightened flywheels to both the K Series and Sigma po

K Series  
 Sigma/Duratec  
 CSR  
 R500 Duratec

**£420** **£520** inc fitting  
**£372** **£472** inc fitting  
**£540** **£640** inc fitting  
**£624** **£724** inc fitting

**REMOTE THERMOSTAT KIT**

Replaces the standard thermostat on the K Series installation and allows water temperature control on the hot side of the radiator. Allows easy bleeding of the system, dispelling any air locks.

K Series

**£138****£230** inc fitting**OIL FILLER CAP**

Machined aluminium oil filler cap to suit Ford Sigma and Duratec engines.

Oil filler cap—Ford engines

**£40****£40** inc fitting**K SERIES STARTER MOTOR**

In our opinion, the best starter motor for the K Series powered Caterham. High cranking power with adjustable spacer to suit all exhaust types. And its made in the UK by WOSP Ltd!

**£280****£325** inc fitting



### XPEL PAINT PROTECTION

Xpel protection film is a clear polyurethane plastic sheet, precision cut to Xpel's motor industry leading design patterns. Produced to exceptional standards, the bodywork lines, apertures and joins are virtually invisible.

Xpel Rear Wings (pair)	£300	inc fitting
Xpel Nosecone Half	£300	inc fitting
Xpel Nosecone Full	£350	inc fitting
Xpel Side Panels (pair)	£400	inc fitting
Xpel Bonnet Scuff Panels	£30	inc fitting
Xpel Chassis Bow Protection (pair)	£50	inc fitting



### WHEEL NUTS

Made from high grade stainless steel, these wheel nuts are guaranteed against corrosion making sure your wheels remain looking at their best.

Stainless Steel Wheel Nuts, Set of 16	£95
---------------------------------------	-----



### WHEEL REFURBISHMENT

Our refurbished wheels are stripped right back to the bare metal, treated and powder coated back to their former beauty. Many colour options are available and some wheels can be turned around instantly on an exchange basis.

Wheel Refurbish Per Wheel	£85
---------------------------	-----



### POLISHED EXHAUST

Have your exhaust machine polished to give it a mirror shine. As it's so visible, a shiny exhaust really lifts the look of the Seven

Machine Exhaust Polishing Service -Single Side Exit	£180	£250	inc fitting
Machine Exhaust Polishing Service - 4 into 1 System	£300	£350	inc fitting
Machine Exhaust Polishing Service - Exhaust Guard	£60	£60	inc fitting



### BODY RESPRAY

Anything from a single panel, to a full body respray. Our own paint shop has years of experience in body restorations including panel repair and replacements. Our paintwork has a mirror finish and we will always do our utmost to ensure a great colour match with any repair.

Panel Respray	From £150
Full Car Respray	From £2000
Painted Nose Band	£200
Painted Bonnet Stripe and Nose Band	£350



### DECALS

We can just supply, or supply and fit a whole range of bonnet decals and side panel decals in practically any colour. Both old and new Caterham designs are available.

Decal Stripe—Bonnet and Nose	£100	£200	inc fitting
Decal Stripe—Side Panels (pair)	£65	£125	inc fitting
Model Decals—Pair	£40	£75	inc fitting

**AERO FILLER CAP AND NECK ASSEMBLY**

Smarten up the appearance of your Caterham's backside with this quality aluminium filler cap and assembly. Fits all injected cars. Available in black or silver.

Caterham Aero Fuel Filler Kit £190 £280 inc fitting

**STAINLESS STEEL SILL PROTECTORS**

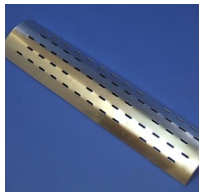
Smarten up the appearance of your Caterham's side panel whilst protecting it from climbing in and out of the car. Also protects the edge from collision with the seat belt buckle.

Stainless Steel Sill Protectors S3 or SV Sold as singles £26 £60 inc fitting

**STAINLESS STEEL WING PROTECTORS**

Protects the venerable part of the rear wing from stone chips. Polished mirror finish

Stainless Steel Wing Protector. S3 or SV Sold as singles £30 £70 inc fitting

**ALUMINIUM EXHAUST SHIELD**

Protects occupants from an untimely leg burn from the hot exhaust.

Aluminium Exhaust Shield. Black or aluminium, S3 or SV £50 £75 inc fitting

**ALUMINIUM CATALYTIC CONVERTER SHIELD**

Protects occupants from an untimely leg burn from the hot catalytic converter.

Aluminium Catalytic converter Shield.  
Black or aluminium, S3 or SV £40 £65 inc fitting

**GRILLE PAINT**

Have your "7" grille painted in a colour of your choice.

Paint "7" Grille, S3 or SV £50 £65 inc fitting

**SIDESCREEEN MIRROR**

Replacement O.E mirror for the Caterham sidescreen.

Sold as singles £65 £80 inc fitting

**WIDE TRACK CONVERSION**

Convert your Seven front suspension to the latest specification wide-track setup. This kit increases the width of the front track by 64mm for enhanced handling and appearance.

Wide Track Front Suspension Kit

£432    £1080 inc fitting

**ANTI-ROLL BAR**

Alter the stiffness of the front anti-roll function of the front suspension by fitting an alternative anti-roll bar. Available in 1/2", 9/16", 5/8" and 18mm. Rear anti-roll bar is adjustable

Front Anti-roll Bar Kit

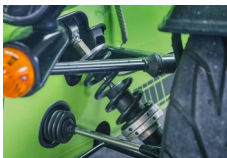
£80    £170 inc fitting

**ADJUSTABLE PLATFORM SUSPENSION KIT**

By fitting this kit, the corner weights of the car can be balanced. In addition, the ride height can be adjusted, giving the car the correct rake front to back and allow for greater clearance of road obstacles such as speed humps.

Platform Kit To Convert Four Dampers

£285    £695 inc fitting

**GEOMETRY SET UP**

The geometry set up will make sure all your cars' wheels are pointing in the right direction. Your car will be measured using the latest laser technology, then adjusted to give the desired measurements.

Geometry Set-up

£300 inc fitting

**FLAT FLOOR SET UP**

This process will weigh all four corners of the car, and then adjustments can be made to ensure all corners are carrying the correct weight. The weight of the driver is also taken into account. Adjustable platform kit must be fitted to enable flat floor setup.

Flat Floor Set-up

£180 inc fitting

**UPGRADED FRONT BRAKES**

This package will give you greater braking power at the front end and will increase pedal feel, enabling more controlled braking

Quad piston calipers, vented discs, stainless hoses

£835    £1015 inc fitting

**UPGRADED BRAKE MASTER CYLINDER**

This upgraded brake master cylinder will give you a much firmer pedal with less travel. This will increase the brake feel, but will require greater effort to stop the car. Ideal for track and fast road use.

Upgraded Master Cylinder

£282    £372 inc fitting

**TRACK BRAKE AND CLUTCH MASTER CYLINDER CAP**

This upgraded cap prevents brake and clutch fluid spillage under heavy cornering, thus protecting your paint.

Upgraded Master Cylinder Cap

£35    £35 inc fitting

**LOWERED FLOOR**

Can be retro fitted to any Seven, giving you around 35mm vertical space within the cockpit. Although it doesn't sound a great deal, you won't believe how much bigger it makes the cockpit feel. Not only for the taller drivers, this modification allows you to feel more in the car, rather than on.

Lowered Floor— Per Side

£650 *inc fitting*

**TUNNEL BAG**

Excellent storage for telephones, keys, sunglasses and other bits and pieces. Slips over the gear stick and clips to the side of the tunnel top.

Tunnel Bag—Large

£120

**MAP POCKET**

Ideal for holding maps, paperwork, phones and other bits and pieces. Fixes with rivets or self tapping screws.

Map Pocket

£24

**MOMO STEERING WHEEL**

High quality Italian steering wheel available in suede or leather, 260mm or 280mm diameter.

MOMO Steering Wheel Leather or Suede

£295

**MECHANICAL OIL GAUGE**

The electronic oil pressure gauge and sender set up on the Caterham is particularly vulnerable and it's common place to get false readings. The mechanical oil gauge conversion sorts this problem once and for all.

Mechanical Oil Gauge Kit

£90

£150 *inc fitting*

**RACE HARNESES**

Caterham 4 point racing harness. Fits to standard chassis mounts. Ideal for track day enthusiasts.

Caterham 4 Point Race Harness— Sold as singles

£220

£270 *inc fitting*

**LEATHER SEATS**

High quality leather seat in black to suit S3 or SV. Supplied complete with runners.

Leather Seat—S3 sold as single

£750

£845 *inc fitting*

Leather Seat—SV sold as single

£850

£945 *inc fitting*



**SEAT HEADREST**

Leather headrest to suit both S3 and SV leather seats.

Leather Headrest—black. Sold as singles

£170

**COMPOSITE QUILTED SEAT LINER**

Designed to fit the composite Caterham seat. Extra padding for comfort and keeps your backside warm in winter

Composite Quilted Seat Liner—sold as singles

£180

**HALF SIDESCREEN**

Ideal for use when aeroscreen is fitted to the car. Fixes using durable dot fasteners.

Half Sidescreen S3 Vinyl—sold as pair

£290

Half Sidescreen S3 Carbon Leather—sold as pair

£400

Half Sidescreen SV Vinyl—sold as pair

£310

Half Sidescreen SV Carbon Leather—sold as pair

£420

**CARBON LEATHER TUNNEL TOP**

Tidy up the interior of your Seven with this high quality carbon leather tunnel top.

Carbon Leather Tunnel Top S3

£360

£450 *inc fitting*

**GT LEATHER SEAT**

A premium leather seat, arguably the best and most comfortable seat made for the Caterham Seven

GT Leather Seat—sold as singles

£950

£995 *inc fitting*

**FLOOR MATTS**

Rubber floor mats to fit both Series 3 cars and SV's

Caterham Rubber Floor Mat—sold as singles

£32

**SIDESCREEN ARMREST**

Can be retro fitted to existing sidescreens, these leather armrests enable easy closure of the sidescreen whilst creating a handy place to rest your elbow. Sold as singles

Sidescreen Leather Armrest—S3, inc fitting kit

£70

£150 *inc fitting*

Sidescreen Leather Armrest—SV, inc fitting kit

£80

£170 *inc fitting*

**HOOD BAG**

Convenient stowage bag for your hood. Mounts onto the roll bar above the boot. Great for easy access and keeps the boot area empty for any luggage.

Hood Bag—S3 or SV

£160

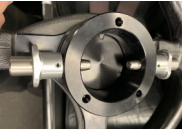


**QUICK RELEASE STEERING WHEEL BOSS**

Brand new and exclusive to Sevens & Classics, this quick release boss can be fitted with optional swivel lock for added security

Benefits of this set up are:

- The boss works on a tapered pin system creating a quick release boss with none of the associated free play of other systems.
- Direct fitment to the Caterham using Momo wheel, without having to replace or remove the upper column.
- Retains standard steering lock feature.
- Optional Swivel Lock for added security. Prevents access to the upper column, meaning steering is impossible.
- Optional Swivel docking base to secure Swivel Lock whilst in transit.



Quick Release Boss	£195
Swivel Lock	£160
Swivel Lock Dock	£25



**CATERHAM SEAT REFURBISH KIT**

Will fit all later type cloth or leather Caterham seats. Includes new abs back plate and foams

Caterham Seat Refurbish Kit	£78	£168 inc fitting
-----------------------------	-----	------------------



**ACES SHIFTLIGHTS**

The Sureshift 2 features Include:-

- Sequentially illuminated high intensity LED's allow the driver to perfectly time up shifts
- Low RPM warning LED instantly warns that driver if he drops out of the engine's power band
- Unique intelligent SmartMax RPM Telltale records maximum "On Power" RPM
- Supplied with professional pre-wired looms featuring high quality positive lock connectors

Aces Sureshift 2	£290	£380 inc fitting
------------------	------	------------------



**CATERHAM SIDE SCREENS**

Increased visibility sidescreens with curved arm room pocket.

Caterham Sidescreen— sold as singles	S3 - Vinyl	£260	£305 inc fitting
	S3 - Carbon Vinyl	£285	£330 inc fitting
	SV - Vinyl	£300	£345 inc fitting
	SV - Carbon Vinyl	£325	£365 inc fitting



**CATERHAM HEATER**

OEM Caterham heater. For replacement or upgrade.

Caterham Heater Kit	£340	£490 inc fitting
---------------------	------	------------------



**CATERHAM ALLOY HANDBRAKE SLEEVE**

Will fit all later Caterham's with the handbrake located on the central tunnel.

Caterham Alloy Handbrake Sleeve - Black anodized **£65** **£100** inc fitting



**CATERHAM ALLOY GEAR KNOB**

Available in different colours and patterns. Please ask for details

Caterham Alloy Gear Knob **£75** **£100** inc fitting

---



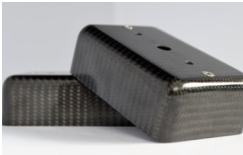
Sevens & Classics source all their carbon from a British manufacture utilising pre-pregnated carbon weave material. Whilst this is not the cheapest method of manufacture, it does guarantee a quality product that will not fade and will withstand the typical wet English weather.



#### CARBON REAR LIGHT BOX

Lighter, stronger and looks great. Direct replacement for the Caterham rubber box.

Carbon Rear Light Box – Standard lights—sold as singles	£125	£150 inc fitting
Carbon Rear Light Box – Led lights—sold as singles	£175	£200 inc fitting



#### CARBON FOG & REVERSE LIGHT BOX

Simple visual upgrade for the rear of your Seven...and lighter and stronger too!

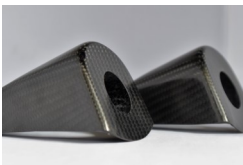
Fog/Reverse Light Box—sold as singles	£125	£150 inc fitting
---------------------------------------	------	------------------



#### CARBON FOG & REVERSE LIGHT WEDGE

These blocks are required to make the fog and reverse light sit on a horizontal plane. The carbon wedges are a direct replacement for the standard Caterham rubber wedges.

Fog/Reverse Light Wedges—sold as singles	£40	£60 inc fitting
--	-----	-----------------



#### CARBON FRONT INDICATOR POD

Direct replacement for the standard Caterham supplied ABS molding. The pod positions the indicator far enough forward for clear visibility.

Front Indicator Pod—sold as singles	£85	£135 inc fitting
-------------------------------------	-----	------------------



#### CARBON NUMBER PLATE COVER

Carbon cover to replace the plastic cover on the standard Caterham unit. Simple fit.

Number Plate Cover	£110	£110 inc fitting
--------------------	------	------------------



#### CARBON FRONT CYCLE WING

Carbon Front Cycle Wing —sold as singles	£350	£425 inc fitting
--	------	------------------



#### CARBON MASTER SWITCH COVER

Direct replacement for the metal Caterham version.

Master Switch Cover	£99	£130 inc fitting
---------------------	-----	------------------

**CARBON BOW PROTECTORS**

This carbon cover protects the cars paintwork from climbing in and out of the car and from wayward seats belts being slung about.

Carbon Bow Protector –S3 and SV, sold as singles **£125** **£200** inc fitting

**CARBON SILL PROTECTORS**

This carbon cover protects the cars paintwork from climbing in and out of the car and from wayward seats belts being slung about.

Carbon Sill Protector –S3 and SV, sold as singles **£85** **£120** inc fitting

**CARBON REAR WING**

Carbon rear wings in pre-preg carbon, guaranteed not to discolour

Carbon Rear Wings –S3 and SV, sold as singles **£550** **£650** inc fitting

**CARBON REAR WING PROTECTOR**

Rear wing stone protector. Requires rivets for fixing

Rear Wing Protector—sold as singles **£85** **£125** inc fitting

**CARBON WRAP AROUND REAR WING PROTECTOR**

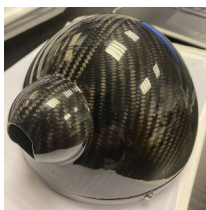
Rear wing stone protector. Requires adhesive for fixing

Rear Wing Protector—sold as singles **£125** **£165** inc fitting

**CARBON NOSE CONE WISKERS**

Add downforce and aesthetics to the nose of your Seven with these stylish carbon whiskers  
Requires adhesive/rivets for fixing

Carbon Nose Whiskers —sold as singles **£50** **£75** inc fitting

**CARBON HEADLAMP**

Reduce weight and add beauty. These headlamp shells are a work of art; you'll be the envy of all who see them!

Carbon Headlamp Shell —sold as singles **£325** **£400** inc fitting

**CARBON NOSECONE**

Beautiful pre-pregnated carbon weave nose cone.

Carbon Nose Cone - S3 **£700** **£800** inc fitting  
Carbon Nose Cone - SV **£750** **£850** inc fitting  
Carbon Nose Cone - CSR **£800** **£900** inc fitting



**CARBON STEERING RACK ROD COVERS**

This carbon cover protects the steering rack arms and tidy's up the aesthetics of the front of the car. Supplied in one part that needs to be cut to provide two correct lengths for your car.

Carbon Steering Road Covers –S3 and SV

£60

£170 inc fitting



**CARBON SIGMA COIL COVER**

This carbon cover fits over the coils and makes the engine look all neat and tidy. At present, only available for the non-VCTi engine.

Carbon Sigma Cam Cover

£150

£150 inc fitting



**CARBON ENGINE BULKHEAD**

Carbon engine bulkhead to suit S3 chassis. Can be cut to the right configuration for your car.

Carbon Engine Bulkhead

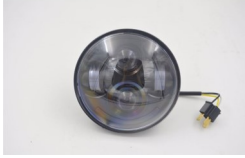
£360

£750 inc fitting

**5 3/4" BLACK/STAINLESS HEADLAMP SHELL**

Quality headlamp shell for the Seven, available in black or polished stainless steel.

5 3/4" Headlamp Shell —sold as singles **£75** **£105** inc fitting

**5 3/4" LED HEADLAMP UNIT**

LED unit to replace standard Caterham halogen headlamp.

5 3/4" Led Light Unit —sold as singles **£120** **£170** inc fitting

**5 3/4" JW SPEAKER LED HEADLAMP UNIT**

JW Speaker LED headlights are arguably the best headlights available for the Caterham. Brilliant light output, great beam pattern and marked for approval worldwide

5 3/4" JW Speaker LED Light Unit —sold as singles **£380** **£455** inc fitting

**7" BLACK/STAINLESS HEADLAMP SHELL**

Quality headlamp shell for the Seven, available in black or polished stainless steel

7" Headlamp Shell —sold as singles **£90** **£120** inc fitting

**7" LED HEADLAMP UNIT**

LED unit to replace standard Caterham halogen headlamp.

7" Led Light Unit —sold as singles **£120** **£170** inc fitting

**7" JW SPEAKER LED HEADLAMP UNIT**

JW Speaker LED headlights are arguably the best headlights available for the Caterham. Brilliant light output, great beam pattern and marked for approval worldwide

7" JW Speaker LED Light Unit —sold as singles **£380** **£455** inc fitting

**CLEAR FRONT INDICATOR LENS**

Direct replacement for the amber Caterham lens. Requires coloured bulb.

Clear Lens Cover **£4** **£4** inc fitting

**LED CLEAR FRONT INDICATOR**

Direct replacement for the standard Caterham indicator.

LED Front Indicator —sold as singles **£25** **£55** inc fitting



**CLEAR/AMBER LED SHARKTOOTH REPEATER**

Wing mounted LED sharktooth repeater. May require LED flasher unit

LED Sharktooth Repeater - Clear/Amber —sold as singles £35 £70 inc fitting

**CLEAR REAR LIGHT UNIT LENS**

Replaces standard coloured Caterham lens.

Clear Rear Light Lens—sold as singles £25 £25 inc fitting

**CLEAR FOG LIGHT LENS**

Replaces standard red Caterham lens. Requires coloured bulb.

Clear Fog Light Lens £6 £6 inc fitting

**LED NUMBER PLATE LIGHT**

Direct replacement for the standard Caterham unit

Led Number Plate Light £20 £50 inc fitting

**LED HIGH LEVEL BRAKE LIGHT**

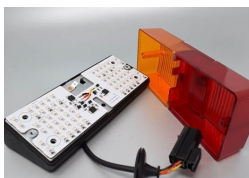
Fixes to the roll over bar, adding that little bit of extra safety.

LED High Level Brake Light £24 £100 inc fitting

**LED MICRO HEADLAMP REPEATER**

Fixes to the side of the headlamp bowl. Negates the need for a repeater on the wing. The bowl will require drilling for fitment.

LED Micro Repeater—sold as singles £12 £42 inc fitting

**LED REAR LIGHT CLUSTER**

Manufactured by JAL, these rear lights are a direct replacement for the Caterham unit. These are arguably the best available rear light setup for the Caterham.

JAL Rear Light Cluster—sold as singles £130 £175 inc fitting

**LED REVERSE LIGHT**

Manufactured by JAL, this reverse light is a direct replacement for the standard Caterham unit.

JAL Reverse Light £40 £85 inc fitting



**LED FOG LIGHT**

Manufactured by JAL, this fog light is a direct replacement for the standard Caterham unit.

**JAL Fog Light** £40 £85 inc fitting



**LED FLASHER UNIT**

This relay is a direct replacement for the Caterham unit and allows LED indicators to flash at the correct rate.

**LED Flasher Unit** £28



**STANDARD FOG LIGHT**

Replacement standard fog light.

**Fog Light** £20 £60 inc fitting



**STANDARD REVERSE LIGHT**

Replacement reverse light.

**Reverse Light** £20 £60 inc fitting



**STANDARD INDICATOR UNIT**

Indicator unit—sold as singles

£20 £60 inc fitting



**CATERHAM LED REAR LIGHT KIT**

This is what Caterham Say:

- Provides increased visibility, ensuring better road safety.
- The only rear LED lights homologated especially for the Caterham® Seven.
- E-marked having met European commission regulations and safety standards.
- Fully sealed rear unit & LED bulbs offer a prolonged life span due to their durability.
- Incorporated reverse and fog lights offer a more modern look while retaining the classic Seven appearances.

**LED Rear Light Kit** £485 £570 inc fitting

**12V / USB POWER SOCKET**

Used to power phones, sat navs, etc. Usually fitted under the dash by the fuse box.

12V / USB Power Socket

£24

£50 inc fitting

**LIGHTS LEFT ON WARNING BUZZER**

Audible warning that your lights are on. Only sounds when lights are on and ignition is off.

Lights Warning Buzzer

£10

£35 inc fitting

**INDICATOR WARNING BUZZER**

Audible warning when indicators are on.

Indicator Warning Buzzer

£20

£50 inc fitting

**BATTERY ISOLATOR**

Easy fitment battery isolator. Prevents discharge of the battery.

Battery Isolator

£20

£50 inc fitting

**BATTERY MASTER SWITCH KIT**

FIA approved master switch, located on the scuttle side.

Battery Master Switch

£90

£250 inc fitting

Battery Master Switch Key

£8

**STARTER BUTTON**

Allows the engine to be started from the push of a button, located on the dash board.

Starter Push Button

£25

£55 inc fitting

**12v BATTERY SMART CHARGER**

Supplied complete with cable to enable connection direct to the battery or with crocodile clips for occasional use. Can be left connected and charges using phased ampage to maintain the battery at its peak.

Smart Charger

£60

**CATERHAM BATTERY**

Replacement Caterham Banner battery, manufactured by one of the worlds leading battery manufacturers. For fitment or collection only due to the acid content.

Banner Battery

£90



### THATCHAM 2 IMMOBILISER UNIT

The Sterling Excel , is the other most effective and reliable Thatcham Category 2 engine immobiliser available, anywhere in the world!

Features include:

Thatcham Category 2 Approval – So its recognised by every UK insurance company

Two transponder tags – Just in case you lose one!

Spares are easily available and lost or damaged touch keys can be deleted from the system

LED – Status indicator instantly activates when engine is stopped!

Everyone can see that the vehicle is secure

**Sterling Immobiliser Unit**

**£350** inc fitting



### K SERIES STARTER MOTOR

In our opinion, the best starter motor for the K Series powered Caterham. High cranking power with adjustable spacer to suit all exhaust types. And its made in the UK by WOSP Ltd!

**£280**    **£325** inc fitting

**HALF HOOD**

Used in place of the standard hood. Although it's partially open to the elements, this convenient half hood still keeps the elements at bay and is simple and quick to erect. Most owners swear by these!

S3 Half Hood—Vinyl	£360	£380 inc fitting
SV Half Hood—Vinyl	£360	£380 inc fitting

**HOOD BAG**

Convenient stowage bag for your hood. Mounts onto the roll bar above the boot. Great for easy access and keeps the boot area empty for any luggage.

Hood Bag—S3 or SV	£160
-------------------	------

**HEATED SCREEN**

Available as glass only, or complete with refurbished surround.

Heated Glass—S3 or SV	£288	£516 inc fitting
Exchange Refurbished Surround	£60	
Exchange Refurbished Stanchions—pair	£40	
Glass to frame rubber	£36	
Screen to scuttle rubber	£15	

**SHOWER CAP**

This waterproof cover is ideal for throwing over the car whilst unattended in inclement weather. Easy to fit and remove.

Caterham Shower Cap—S3	£155
Caterham Shower Cap—SV	£165



**BOOT BAG**

Locates on top of the boot space, creating added carrying capacity for those trips away.

- S3 Boot Bag—Vinyl £300
- SV Boot Bag—Vinyl £350



**TUNNEL BAG**

Excellent storage for telephones, keys, sunglasses and other bits and pieces. Slips over the gear stick and clips to the side of the tunnel top.

- Tunnel Bag—Large £120



**INDOOR CAR COVER**

Luxury indoor cover with Caterham logo's. Stretch fit for easy fitment, made with soft fabric to protect your cars paint.

- Indoor car cover S3 & SV £195



**OUTDOOR CAR COVER**

The outdoor cover is manufactured from advanced fabric, fully waterproof, fully breathable, strong and stretchy. The fabric is extremely soft on the inside and extremely durable.

- Outdoor Car Cover S3 & SV £249

**MINILITE WHEEL—BLACK AND DIAMOND CUT**

The ever popular black and diamond cut Minilite wheel, to suit de-Dion cars. These are refurbished used wheels, but in as new condition.

6" x 13"

£100

6" x 14"

£100

**MINILITE WHEEL—SILVER**

The ever popular silver Minilite wheel, to suit de-Dion cars. These are refurbished used wheels, but in as new condition.

6" x 13"

£95

6" x 14"

£95

**PRISONER WHEEL**

This wheel was originally used by Caterham on their Limited Edition Prisoner Seven and was subsequently made available as an option on other models. These are refurbished used wheels, but in as new condition.

6.5" x 15"

£100

**5 SPOKE WHEEL**

This wheel was originally used by Caterham on their HPC Seven and was subsequently made available as an option on other models. These are refurbished used wheels, but in as new condition.

7" x 16"

£100



**CLUTCH CABLES**

Standard replacement clutch cables for K Series, Vauxhall and Ford Crossflow.

Clutch cable, K Series and Vauxhall, RHD	<b>£48</b>	<b>£95</b> inc fitting
Clutch cable Ford Crossflow	<b>£56</b>	<b>£103</b> inc fitting



**GEARBOX SPEEDOMETER ANGLE DRIVE**

Speedometer angle drive. To suit all cars with cable driven speedometer

Speedometer Angle Drive	<b>£220</b>	<b>£320</b> inc fitting
-------------------------	-------------	-------------------------



**GEARBOX SPEEDOMETER TRANSDUCER**

Speedometer transducer. To suit all cars with electronically driven speedometer

Speedometer Transducer	<b>£160</b>	<b>£260</b> inc fitting
------------------------	-------------	-------------------------





**LADIES POLO**

Quality heavy weight Ladies polo in black with grey S&C logo.  
Ladies Polo—S, M, L.

£35



**MENS POLO**

Quality heavy weight mens polo in black with grey S&C logo.

Men's Polo—S, M, L, XL

£40



**MENS SOFTSHELL JACKET**

Comfortable, warm and shower proof jacket with centre zip. Black with S&C logo.

Men's Softshell Jacket—S, M, L, XL

£50



**MENS T'SHIRT**

Heavy cotton T'Shirt with S&C logo. Blue with blue logo.

Men's T'Shirt—S, M, L, XL

£15



**MENS CATERHAM T'SHIRT**

T'Shirt with Union Jack Logo.

Caterham T'Shirt— S, M, L, XL

£22

**CATERHAM WOODEN PUZZLE/MODEL**

Get your gray matter working with this fabulous wooden puzzle. Made from laser cut ply, all you need is some glue and a little patience to create a stunning Caterham model, measuring over 30cm in length.

**Wooden Caterham Puzzle/Model****£35****BEANIE HAT**

Grey wool beanie hat with black S&C logo.

**Grey Beanie—One Size****£12****PEAKED BEANIE HAT**

Black wool beanie hat with peak. Black S&C logo.

**Grey Beanie—One Size****£15****QUADRA MUG**

Quadra mug in white with S&C logo.

**S&C Quadra Mug****£7.50**



#### CATERHAM SEVEN ANNUAL SERVICE

Annual service for your Caterham. Price includes replacing oil and filter, general lubrication and nut and bolt check, plus comprehensive vehicle check over. Any faults found during the service will be reported back to the owner before any work is undertaken. Service check sheet can be provided upon request.

Caterham Annual Service inc health check report

£360



#### CAR STORAGE

Kept secure at our Brands Hatch location, we will look after your vehicle as if we owned it. Stored in our dry warehouse facility, the battery will be kept charged, the bodywork clean and we will run up the engine weekly and ensure all mechanicals are kept operational.

Car Storage, from per week

£36



#### DELIVERY & COLLECTION

Delivery and collection. To and from your designated address in our covered bespoke transport truck. Take the hassle out of bring your car to us; let us do the work!

Prices on request.



#### MOT SERVICE

Drop your car off with us, and we'll look after getting your car through its annual MoT. Any work required will be discussed with you prior to any work being undertaken, all with no retest fees.

MoT Service

£60



SEVENS & *Classics*

---

BRANDS HATCH

Brands Hatch Park

Fawkham

Kent

DA3 8PU

Phone: 01474 871184

E-mail:

[enquiries@sevensandclassics.com](mailto:enquiries@sevensandclassics.com)

Web: [www.sevensandclassics.com](http://www.sevensandclassics.com)